

The Newsletter of the Southeastern Registrars Association

INSIDE THIS ISSUE:

<i>Notes from the Chair</i>	1
<i>Treasurer's Report</i>	2-3
<i>SEMC Photos</i>	4-5
<i>Membership</i>	6
<i>SERA News</i>	7-12

SERA OFFICERS

Chair:

Tricia Miller

Vice-Chair:

Jennifer Spence

Secretary:

Alyssa Magnone

Treasurer/ Membership Chair:

Kaitlyn Hof-Mahoney

Development Chair:

Ainsley Powell

Communications Chair:

Sabra Gossett

State Coordinator:

Deanna Taylor

Scholarship Chair:

Elizabeth Le

Nominations Chair:

Christy Sinksen

Notes from the Chair

Tricia Miller

Dear SERA Members,

I am so honored to be serving as your new SERA Chair. My first duty is to give a big THANK YOU to Corinne Midget for her years of service to SERA. She stepped up to serve SERA in many capacities and as chair saw it through the onset of the Covid pandemic. Her dedication and leadership leaves me with a strong, well-run organization and I hope that I can fill her shoes!

I want to say congratulations and thank you to the other members of the SERA board as well. Vice Chair Jennifer Spence (Curator of Kentucky State Parks, Frankfort, Kentucky) and Treasurer/Membership Chair Kaitlyn Hof-Mahoney (Executive Director, Matheson History Museum, Gainesville, Florida) were both elected for second terms. Secretary Alyssa Magnone (Associate Preservation Specialist, Northeast Document Conservation Center); Development Chair Ainsley Powell (Curator of Collections, City of Raleigh); Communications Chair Sabra Gossett (Collections Manager, Berman Museum - Anniston Museums and Gardens); State Representative Coordinator Deanna Taylor (Registrar, 21c Museum Hotels); Scholarship Chair Elizabeth Le (Collections Manager & Registrar, Hunter Museum of American Art; and Nominations Chair Christy Sinksen (Associate Registrar Georgia Museum of Art) all continue their terms on the board. I look forward to working with this excellent group of SERA officers.

As we head into the holidays and start thinking about New Year's resolutions, I encourage everyone to start thinking about session topics for the next SEMC conference. It's never too early! There were some fantastic sessions in Louisville and I hope that SERA can support even more collections-based proposals for the upcoming conference in Baton Rouge, LA. If you have an idea and are not sure how to turn it into a session or how to find panel participants, feel free to reach out to me. SERA is here to help!

Happy Holidays,
Tricia Miller

TREASURER'S REPORT

KAITLYN HOF-MAHONEY

Greetings SERA Members,

2023 has been a great year for SERA! We have seen a 26% increase in membership and welcomed 20 brand new members. We have also seen strong income from sales of Basic Condition Reporting and our sponsorships.

We were able to give two travel scholarships for SEMC this year:

- Emerging Professional – Marianna Luquette, LSU Museum of Art
- Seasoned Professional – Kaitlyn Hof-Mahoney, Matheson History Museum

Thank you to Willis Towers Watson and TCI for their continued support of SERA with donations of \$1000 each! Thank you also to Blick Art Materials for providing two \$50 gift certificates for our members.

Memberships (As of November 3, 2023)

- 102 total 2023 SERA Members in Good Standing (+26% from 81 members before SEMC 2022)
 - o 1 Associate Member
 - o 61 Individual Members
 - o 39 Institutional Members from 7 Institutions
 - o 1 Student Member
- 20 New Members in 2023
- 21 2022 Members have not renewed

As of November 22, 2023, the current balance in the Chase checking account is \$9,888.74. The current balance in the PayPal account is \$2,415.71. The combined total on-hand is \$12,304.45, down \$2,630.97 (-17.6%) from the \$14,935.42 on-hand reported this time last year.

SERA's Year to Date fiscal activity as of November 22, 2023 is outlined below. Please feel free to contact me for any additional information.

Kaitlyn Hof-Mahoney, Treasurer/Membership Chair

TREASURER'S REPORT

KAITLYN HOF-MAHONEY

THE SOUTHEASTERN REGISTRARS ASSOCIATION, INC.

Statement of Activity

January 1 - November 22, 2023

	TOTAL
▾ Revenue	
▾ Donations	
Amazon Smile	15.62
Sponsorship	2,000.00
Total Donations	2,015.62
▾ Membership	
Associate	50.00
Individual	1,400.00
Institutional	525.00
Student	15.00
Total Membership	1,990.00
PayPal Sales	50.00
Royalties	913.86
Total Revenue	\$4,969.48
GROSS PROFIT	\$4,969.48
▾ Expenditures	
Business Registration Fees	15.00
Dues, Fees, & Subscriptions	367.99
Gifts	104.35
Legal & Professional Services	40.00
Meals & Entertainment	70.00
Office Supplies & Software	144.00
PayPal Fees	137.84
Respite	4,318.80
▾ Scholarships	
SEMC	1,500.00
Total Scholarships	1,500.00
Total Expenditures	\$6,697.98
NET OPERATING REVENUE	\$ -1,728.50
NET REVENUE	\$ -1,728.50

SEMC—SERA RESPITE



SEMC—FILSON HISTORICAL SOCIETY TOUR



MEMBERSHIP

New* / Renewing Members

Arkansas

Harrison Mitchell*

Registrar, Historic Arkansas Museum

Florida

Megan Cotter*

CA Archivist, Museum and Collector Resource

Valarie Kinkade

Principal, Museum and Collector Resource

Georgia

Annelies Mondt

Senior Advisor to the Director, Georgia Museum of Art

Louisiana

Sarah Rose Janko*

Operations Manager, Porter Art Services

North Carolina

Loran Berg

Collections Manager, Mountain Heritage Center

Allison Kohne*

Collections Registrar, North Carolina Maritime Museum

South Carolina

Miranda Helton*

Registrar, Patriots Point Naval and Maritime Museum

Patricia Shandor

Visitor Services Coordinator, Lexington County Museum

Tennessee

Ellen Lofaro

Director of Repatriation, University of Tennessee, Knoxville

Texas

Kali Mason

Curator, Perot Family Collections

New* / Renewing Institutional Members

Atelier4, Charlotte, NC

Justine Chan, Senior Project Management*

Estevan Collado, Sales Manager*

Luke Lunsford, Project Management*

Kimberly Schantz, Director of Museum & Exhibition Projects*

Jonathan Schwartz, CEO

Steve Pardun, VP Sales and Business Development*

Shiloh Museum of Ozark History, Springdale, AR

Angie Albright, Director

Stephanie Carter, Image Collections Manager

Aaron Loehndorf, Grounds Curator and Collections Specialist

Carolyn Reno, Collections Manager/ Assistant Director

Rachel Whitaker, Research Specialist

SERA NEWS

ALABAMA

Pamela Bransford

Registrar

Montgomery Museum of Fine Arts

The MMFA has graduated its first curatorial assistant, a new position that was designed to offer entry-level experience in the curatorial field. Emily Sears is leaving to become the curator and museum registrar at the Capitol Museum, a department of the Idaho State Historical Society located in Boise. She will be responsible for the care of the Capitol collection, maintaining records, and overseeing permanent and temporary exhibitions. Although she has enjoyed the extended summers in Alabama, with family in North Dakota and Montana, Emily will be somewhat closer to home. We will miss her and wish her all the best in her new job.

Sabra Gossett

Collections Manager

Berman Museum—Anniston Museums and Gardens

Berman Museum opened *The Golden Ratio*, a Fibonacci sequence based exhibit, last month. In this exhibit, visitors can see art and artifacts displaying the Golden Spiral. The exhibit will be open until April 2024. *The Golden Ratio* coincides with an exhibit of the same name at its sister institution, the Anniston Museum of Natural History. In their exhibit, guests can explore Fibonacci in the natural world. Their exhibit will be open until Fall 2024.

Paula Haymon

Collections Manager and Registrar

Wiregrass Museum of Art

Wiregrass Museum of Art has passed the American Alliance of Museums' Core Documents Verification, an important milestone in its ongoing efforts to demonstrate excellence and meet standards and best practices, with a goal of national accreditation. As the registrar/collections manager, Paula was heavily involved with updating all the collections-related documents. The WMA undertook this outside

review to illustrate to the public that the museum has in place the policies and plans that are essential to good museum management and which provide their staff and governing authority the structure, ethical grounding, and accountability needed to make informed and consistent decisions for the good of the public and in support of the mission and sustainability.

Rose Wood

Registrar

Birmingham Museum of Art

The Birmingham Museum of Art is pleased to host *Heroes and Villains: The Art of the Disney Costume*, from February 17 - August 18, 2024. Comprising of 70 costumes spanning nearly half a century, *Heroes and Villains: The Art of the Disney Costume* takes visitors on a journey into the enchanting worlds of Disney, highlighting the innovative ways some of the iconic characters are brought to life through the artistry and imagination of their costumes.

ARKANSAS

Lark Buckingham

Registrar

Old State House Museum

Old State House recently received the donation of a gown worn by Sally Miller when she won Miss Arkansas Pageant in 1958. She was also a top-ten finalist for Miss America that year. In 1990 she became the first woman to run the length of the Great Wall of China. The gown is made of silk taffeta, tulle, lace, and cotton. (Photo courtesy of Old State House Museum)



Carolyn Reno*Collections Manager and Assistant Director***Shiloh Museum of Ozark History**

Shiloh Museum recently acquired rare copies of the Daily Echoing Nemesis, a newspaper printed in Eureka Springs, Arkansas from 1885-1886. Staffer Aaron Loehndorf has not found any extant or digital copies anywhere. The museum plans to make digital copies and preserve the very fragile issues. The collection staff has also been working on cleaning up catalog records for migration to a new data base system, its first update in 25 years. Records will transfer from Microsoft Access to Argus.

FLORIDA**Christine Collado***Project Management & Marketing Coordination***ATELIER4**

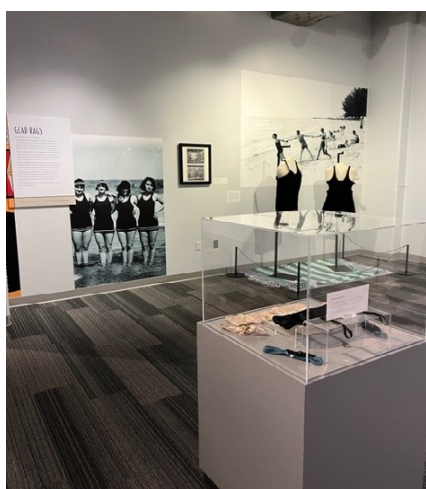
Kelvin Barbosa is elevated to Manager of crating and joins General Manager Javier Torres and Senior Project Manager Justine Chan. Miami will serve as a depot for Atelier 4's Island of Misfit Crates. IoMC was presented as part of PACCIN's virtual webinar on sustainability initiatives in museum packing and crating.

**Heather Culligan***Curator of Collections***Tampa Bay History Center**

Heather Culligan, Curator of Collections at the Tampa Bay History Center, reports that the Curatorial and Collections team opened two exhibitions on November 4th focusing on the 1920s in Florida.



The first, Decade of Change: Florida in the 1920s, features over 100 objects pertaining to fashion, dance, transportation, prohibition, sports, race, architecture, and religion of the 1920s. Of particular interest are two wool bathing suits, a large safe from



Sloppy Natz Cafe in Ybor City, and a membership card and handbook from the local Ku Klux Klan chapter for women. The exhibit also features two interactives, one to teach visitors the foxtrot and the other showcasing sermons from Billy

Sunday and Aimee McPherson. The second exhibit, Sharps and Marks in Paradise: Selling Florida in the 1920s, includes over 40 maps from the Touchton Map Library at the Tampa Bay History Center that tell the story of the land boom in the 1920s. While the team is proud of both exhibitions, it will probably

be the last time they decide to open two exhibitions at once! Once both exhibitions opened, Heather turned her attention to beginning the migration to a new CMS! After several years together, the Tampa Bay History Center is moving from PastPerfect Museum Software (museum collection) and Luna (Touchton Map Library collection) to Odyssey by HistoryIT. The process will take approximately three months to complete. The Collections team is excited about the online capabilities of Odyssey and utilizing one system for the entire collection.

GEORGIA

Erica Hague

Collections Manager

Atlanta History Center

Atlanta History Center staff have been busily working on digitization of museum collections to beef up our search portal. The work that our project staff have completed since January is cumulating as photography of the items and the final digital records. If you're interested in seeing some of the items go to <https://www.atlantahistorycenter.com/learning-research/search-the-collections> Our GRAs and Interns that have worked on this project include, Deb Wold, Jess Landers, Titilope 'Rosemary' Falola, all from the University of West Georgia, and Amel Jackson from Agnes Scott College. This project has given us some unique insight into the timing for different



parts of the project. We found it takes GRAs about 30 minutes per object record to inventory, it takes staff about 1.75 hours to do the data cleanup and research for each record, and we can photograph about 7-10 objects an

hour. We've compiled this data for future projects, and to answer the ongoing question "why does it take so long!" This of course doesn't include the time that it takes to do image cleanup, and the pulling and staging for each piece as it is photographed. All-in-all, it has been a very rewarding project and we look continuing this work. We are looking forward to welcoming Jen Glaze as our Associate Registrar full-time



in January 2024. Jen has been working part-time on digitization project as Project Registrar and is responsible for the research and data cleanup of the records. In this new role she will be working to bring items that are on exhibit in our Turning Point Gallery online before our 100th year anniversary in 1926. Erica has also been busy assisting the Georgia Heritage Responders (GHR) Education Committee. GHR is a new state-wide group in Georgia, formed primarily from Heritage Emergency Response Atlanta (HERA) and Savannah Heritage Emergency Response (SHER) members. GHR offered our first in person training this past November at the Georgia Archives and plan to have a free virtual training for Mayday that will focus on emergency plans, and will include tabletop exercises. While our primary focus is Georgia, folks from out of state are always welcome to attend. If you're in Georgia and are interested in getting involved in GHR, please reach out!

KENTUCKY**Hannah Mahnken***Registrar***Kentucky Historical Society**

It was great to meet many of you at SEMC in November! The last SEMC I attended was back in 2017 as a graduate student, so I enjoyed making connections and hearing new ideas. Linda Endersby from History Nebraska made a comment in her session on Principles of Museum Collections Ethics that stuck with me: "Passive collecting skews the historic record."

Our collections committee has frequently discussed a need to be better at active collecting, so I hope to use this point to bolster my call for more committee members and collections staff. I also found the session on accreditation helpful. Our self-study for reaccreditation is due this coming March, so I'm sure much of my time in the coming months will be focused on that. Enjoy the rest of 2023!

NORTH CAROLINA**Christine Collado***Project Management & Marketing Coordination***ATELIER4**

Travis Laughlin joined the management team at Charlotte assisting general manager Tony Linenberger as the facility and storage supervisor. Char-

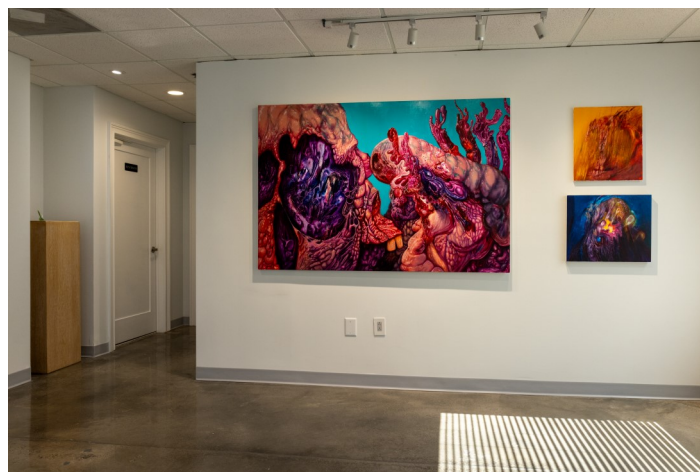


lotte's crate shop reopened in the brand new space under the stewardship of Nate Gettings. Charlotte hosted the second Registrar of the Year (RoTY) event at the new location where Director Emeritus of the

Georgia Museum of Art, William Eiland, serving as juror, announced his selection of Katherine Steiner of



the Mint Museum as the awardee. The event also featured Atelier 4's first ever staff art show, curated by Jonathan Stuhlman, curator of American Art at



the Mint Museum. Entertainment at the event was provided by Pearl and the Charlotte Holding Company, a Janis Joplin Tribute. Charlotte will serve as a de-



pot for Atelier 4's Island of Misfit Crates. IoMC was presented as part of PACCIN's virtual webinar (link: <https://vimeo.com/884988168?share=copy>) on sustainability initiatives in museum packing and crating.



Marian Inabinett
Curator of Collections
High Point Museum

The High Point Museum's current exhibit, *Fields & Feathers*, explores the estates established in the early 20th Century in the Piedmont area of North Carolina by millionaire Northern industrialists. The focus of the exhibit is Deep River Lodge, built outside nearby Jamestown by Clarence Hungerford Mackay around 1905. At the time, Mackay was one of the wealthiest men in America, heir to a silver mine fortune and head of the Postal Telegraph and Cable Company. Mackay had hired a young Englishman, Edward Arm-

strong, to manage his estate, his pedigree dogs, and his hunting hobby. Armstrong bought the land from the Mackay family in 1939, and it stayed in the hands of his heirs until 2021. The family collection has been hidden for about 80 years, and only a fraction of it is on exhibit at the Museum. The history of the estate and the people involved is not well-known or documented, so curator Marian Inabinett had to do most of the research using the documents and photographs in the family collection. Luckily, she had a lot of help from a friend of the family – who had kept the whole collection from going in the dumpster and spent most of the recent pandemic inventorying the approximately

25 boxes of letters, papers, maps, and photographs. Searching the newspaper databases proved useful -- because most of the local editors liked to report on these wealthy men and their guests -- but the most interesting infor-



mation came from the collection itself. The hardest part was figuring out what to include in the exhibit. Crystal Williams at the Museum scanned over 75 photographs and images, including a glass plate negative and blueprints of the lodge from the renowned architecture firm of McKim, Mead, and White. Some of the photographs were only 4 x 5 inches, and we were able to enlarge them to almost six feet tall! We included over 50 images from this collection in the exhibit. Then, we had to consider the artifacts. Overall, there are almost 200 items on loan, including over 50 pieces of memorabilia documenting Cunard and White Star ocean liner voyages taken by the Armstrong family from 1899 through 1938. The artifacts exhibited include valuable pieces including a



painting, some photographic prints, presentation watches, and silver. Registrar Corinne Midgett worked with our insurance company and also dealt with all the loan paperwork. Corinne and her volunteers also spent numerous hours cleaning the items, since most had been in old steamer trunks for decades. Corinne had the fun of discovering a mouse nest in the quail crate as we were getting it from the owners. Because we couldn't fit everything in the exhibit, we made a "tour" on the Museum's app to show more. If you visited the StQry booth at SEMC's expo hall in Louisville, the reps were showing it off. The exhibit includes information about other lodges and estates as well as several artifacts in the Museum's collection related to the field trials and dog trainers. At the time, these estates and the field trials were important economically to the Piedmont. Local landowners got paid hefty fees for shooting rights on their land, and numerous locals were employed for

the shooting season. The field trials brought a lot of national attention as well as to the dog trainers and breeders with kennels in the area.



After the exhibit opened and the Museum received more press about it, we had several people contact us about members of their families associated with some of the old lodges, further helping to document this long-forgotten story. The exhibit ends in early February 2024.



Corinne Midgett

Registrar

High Point Museum

In August, the High Point Museum was awarded a \$349,248 Sustaining Cultural Heritage Collections grant from the NEH. The grant supports the second phase of a project aimed at improving the museum's preservation environment. The funds will go toward replacement of the aging HVAC system with the City of High Point funding the balance. Some components of the existing system date to the early 1970s and it's a constant balancing act and science experiment to keep it in working order. Museum staff is excited to move forward on this major upgrade!



Like us on
Facebook and LinkedIn!

Check out our Job Board, updated weekly,
at
seregistrars.org/career



SERA NEWS is published quarterly by the Southeastern Registrars Association. The Southeastern Registrars Association (SERA) recognizes high standards of museum practice and fosters professional growth among museum registrars in the Southeastern region of the United States. We promote the exchange and dissemination of information and ideas through education seminars, publications and other means. SERA initiates and supports activities and projects which help create an atmosphere of cooperation and communication among, and between, registrars, other museum professionals, and those in related fields, and pursues further development of professional practices in the field.

Membership: Individual membership (\$25.00) is open to museum professionals who perform registrarial functions for institutions in the twelve states of Alabama, Arkansas, Florida, Georgia, Kentucky, Louisiana, Mississippi, North Carolina, South Carolina, Tennessee, Virginia, West Virginia, and the territories of Puerto Rico and the Virgin Islands. Associate membership is also available to those outside the region or those employed by for-profit businesses or organizations who express interest in the objectives of SERA.

Membership Contact:
SERA Treasurer/Membership Chair
Kaitlyn Hof-Mahoney